

FIGURE 3.4-21.1 ET-60 ET/ORB FWD BIPOD STRUT HANDLING AND HOISTING I/F DETAIL

FIGURE 3.4-22.1 NOTES - SILTS POD I/F & CLEARANCE			
GENL NOTES	FLAG NOTES	EFFECT NOTES	
		1	OV-102 ONLY

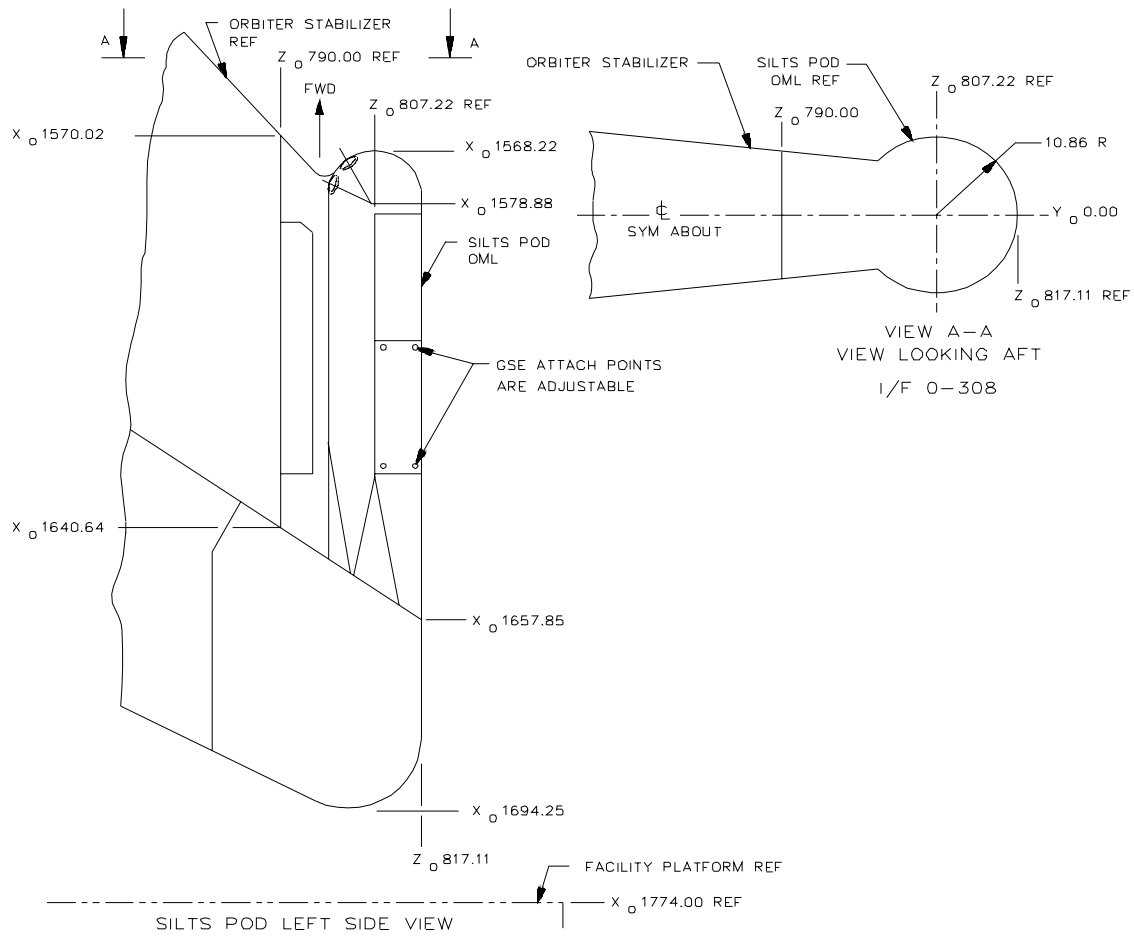


FIGURE 3.4-22.2 O-308 SILTS POD I/F & CLEARANCE

FIGURE 3.4-23.1 NOTES - EXTENDED DURATION ORB (EDO) CRYO PALLET H2 & O2 TEST & C/O I/F & CLEAR

GENL NOTES	FLAG NOTES	EFFECT NOTES	
	1		GENERAL CLEANLINESS REQUIREMENTS FOR FACILITY: CLASS 100,000 (INLET AIR ONLY) HUMIDITY 50% ± 10% RH TEMPERATURE 75 ± 5 F PRESSURE 0.10 INCH H ₂ O STATIC HEPA FILTER 99.7%
	2		THERE SHALL BE 6 INCHES MINIMUM CLEARANCE BETWEEN THE EDO (INCLUDING MAIN STRUCTURE, TANKS & TANK SUPPORTS) OUTER MOLD LINES & THE GSE PLATFORMS.
		3	STS-51, 55 & SUBS; OV-102, OV-104 & -105 ONLY
	4		CENTER PADS (2) ARE NOT REQUIRED TO BE SECURED TO FLOOR AT KSC (THE SUPPORT STAND WAS USED AT PALMDALE AND THESE PADS WERE USED TO MEET CALIFORNIA EARTHQUAKE REQUIREMENTS).

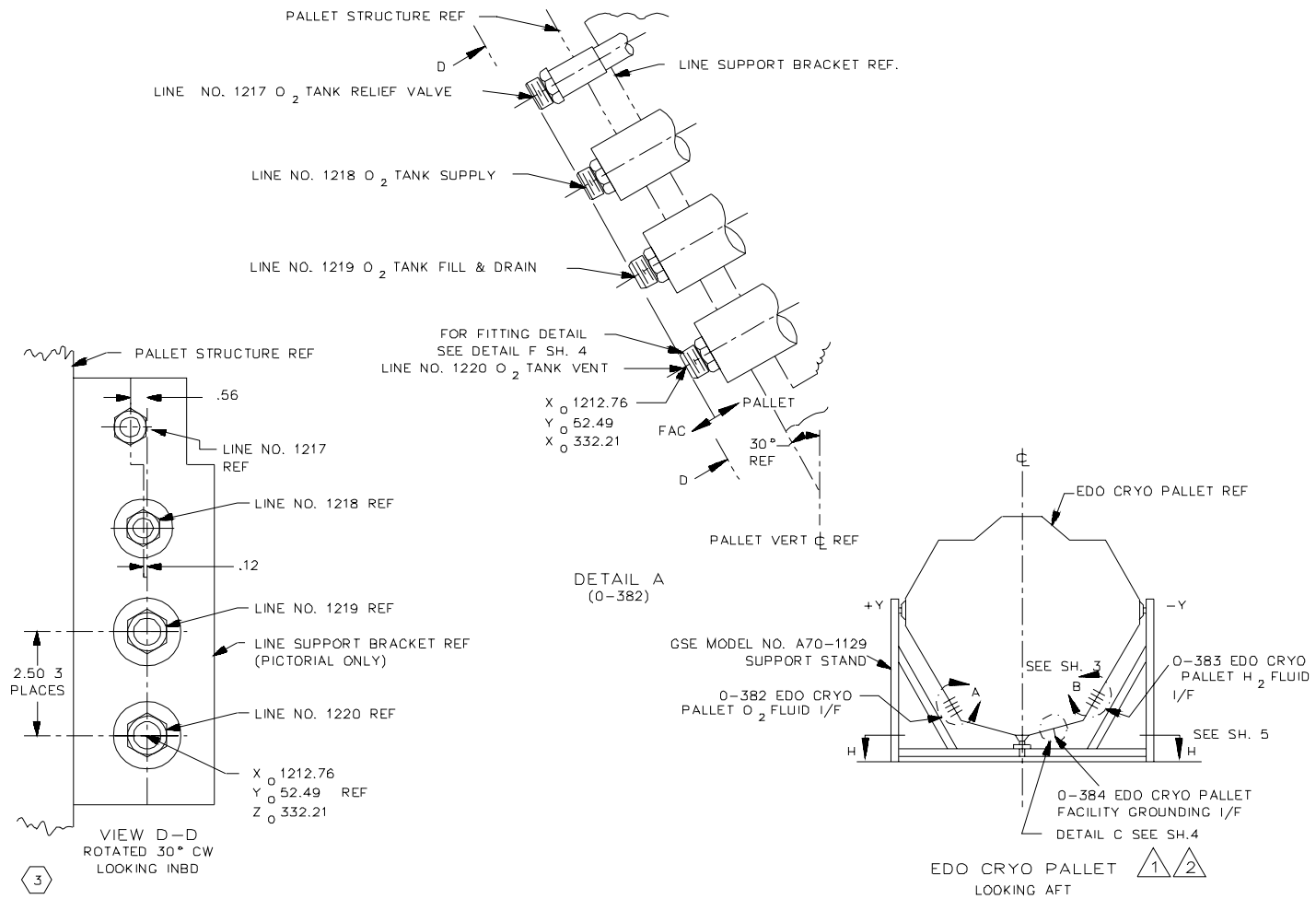
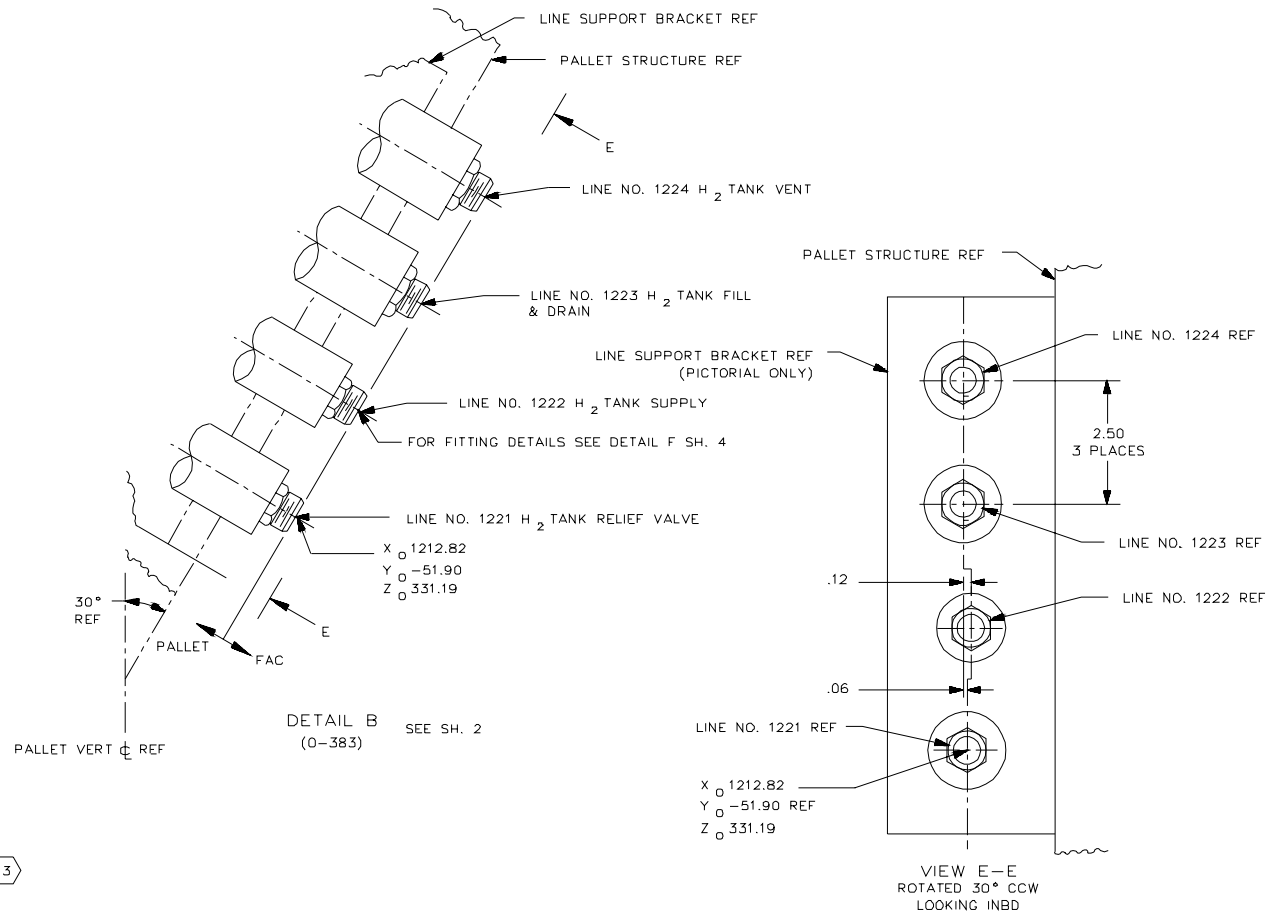
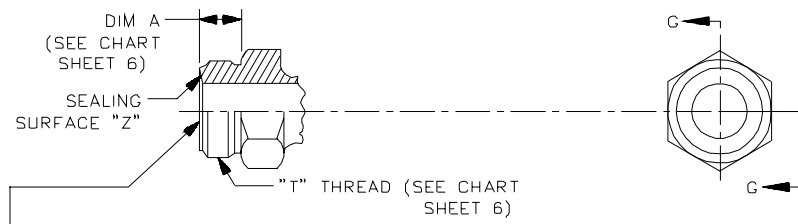


FIGURE 3.4-23.2 EDO CRYO PALLET MAIN VIEW & O₂ DETAILS



3

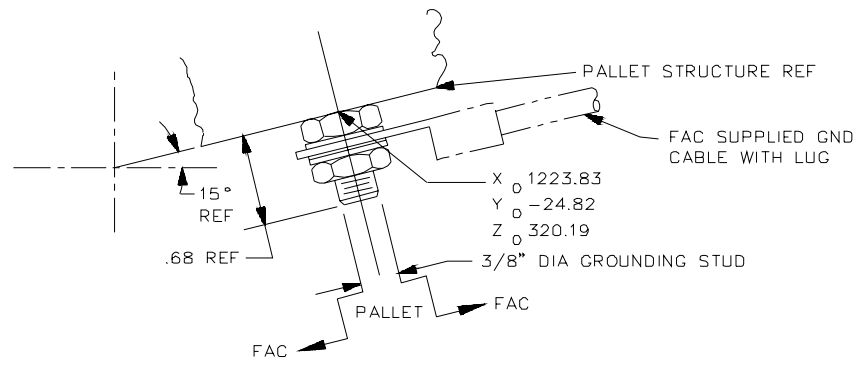
FIGURE 3.4-23.3 EDO CRYO PALLET H₂ DETAILS



FITTING END PER RESISTOFLEX CORPORATION
 DRAWING R44090MP, TYPE B; OR PER AIRDROME
 PARTS CO. DRAWING TS500 STYLE E; UNCOATED
 WITH 8RMS SURFACE TEXTURE ON SEALING
 SURFACE "Z" (SEE CHART SHEET 6)

SECTION G-G

DETAIL F SEE SH.2 & 3



DETAIL C SEE SH. 2

FIGURE 3.4-23.4 EDO CRYO PALLET H2 & O2 FITTING AND FAC GROUND DETAILS

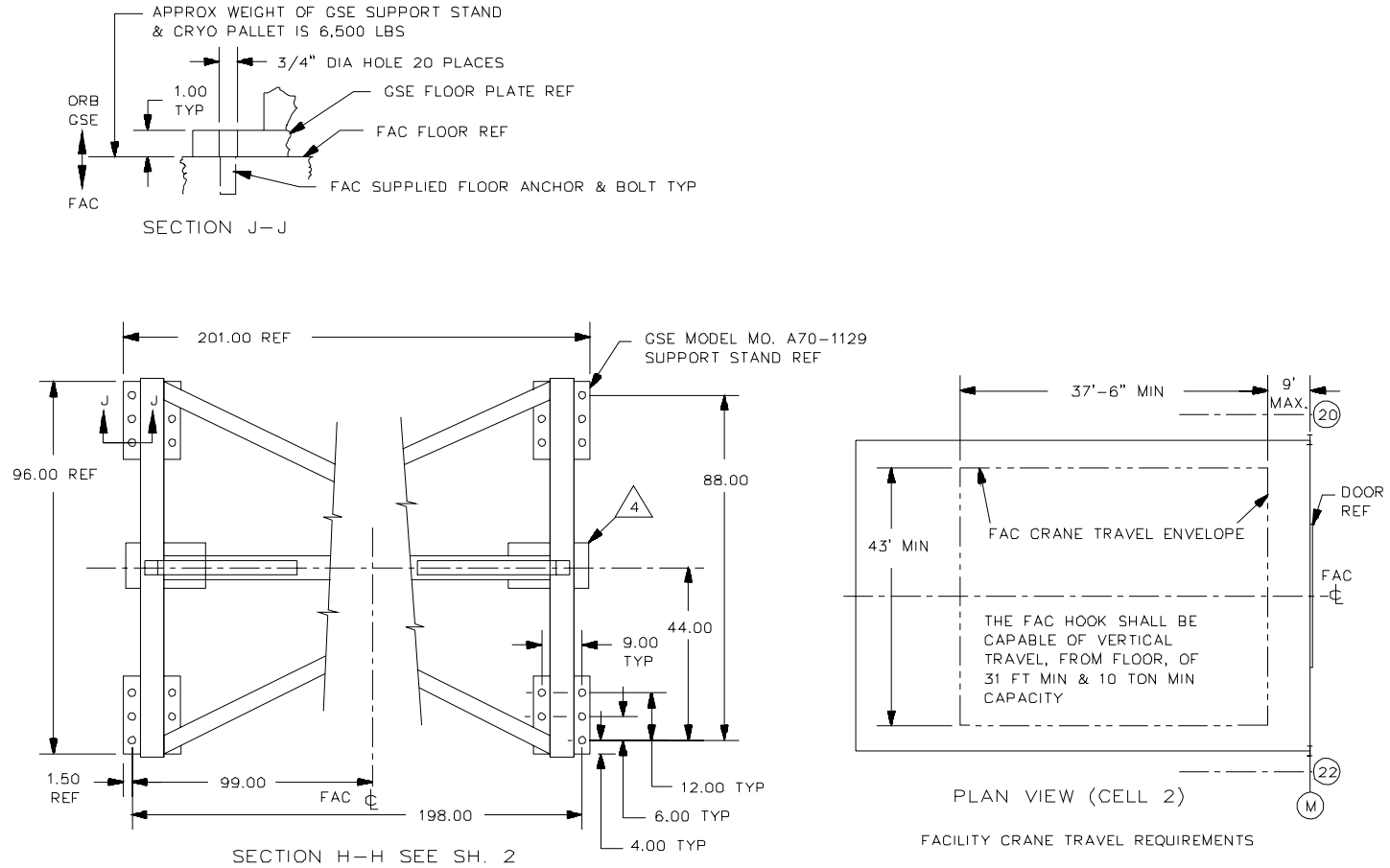


FIGURE 3.4-23.5 GSE SUPPORT STAND & PLATFORM CLEARANCES

FIGURE 3.4-23.6 EDO CRYO PALLET H₂ & O₂ TEST & C/O I/F AND GSE PLATFORM CLEARANCES

LINE NO. FITTING SIZE CHART				
LINE NO.	"T" THREAD CLASS 3A	DIM A	FLAG NOTES	EFFECT NOTES
1218 1222	.5625-20 UNJS	.295		3
1219 1220 1223 1224	.8438-18 UNJS	.372		3
1217 1221	.7188-20 UNJS	.308		3

FLUID LINE LOADS CHART					
LINE NO.	BENDING MOMENT IN LBS	AXIAL LOAD LBS	SHEAR LOAD LBS	FLAG NOTES	EFFECT NOTES
1217 THRU 1224	35	8	8		3