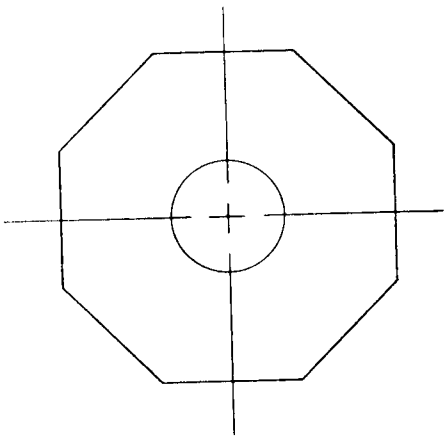
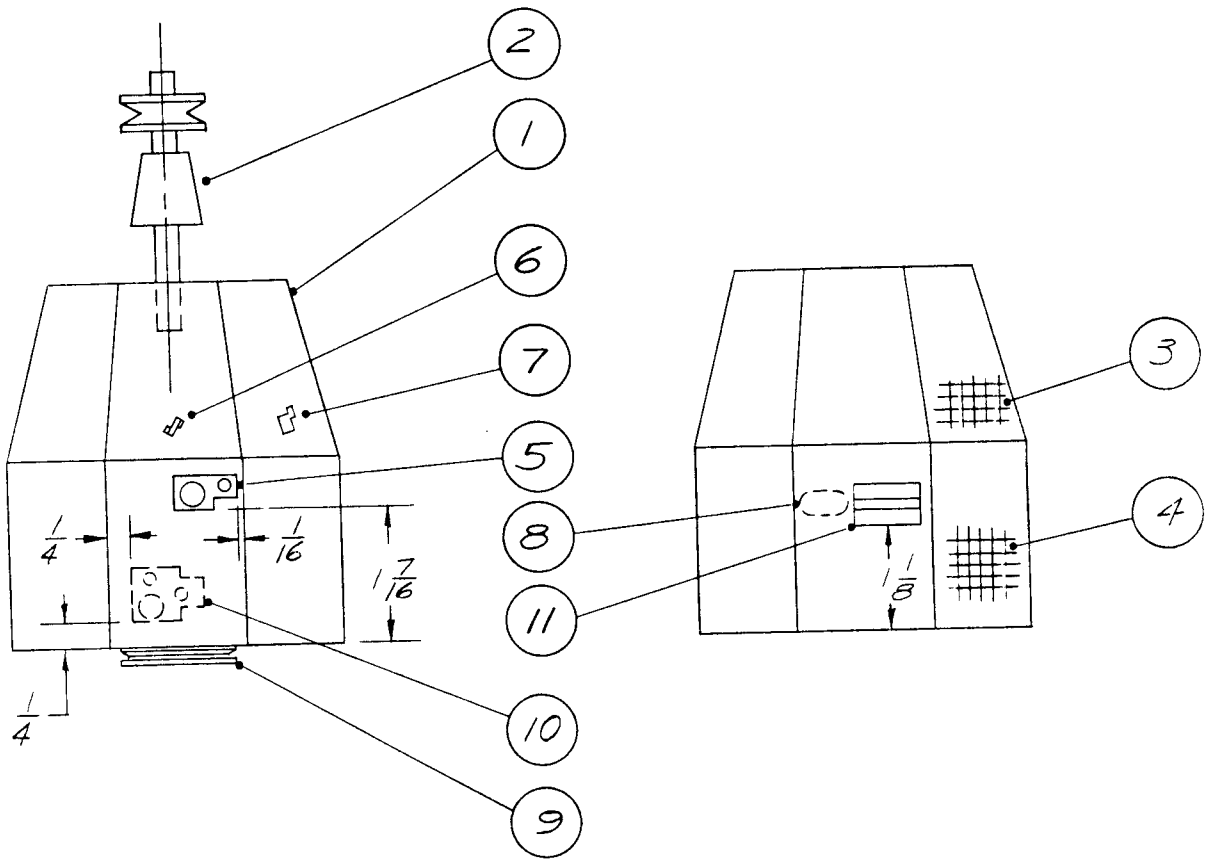
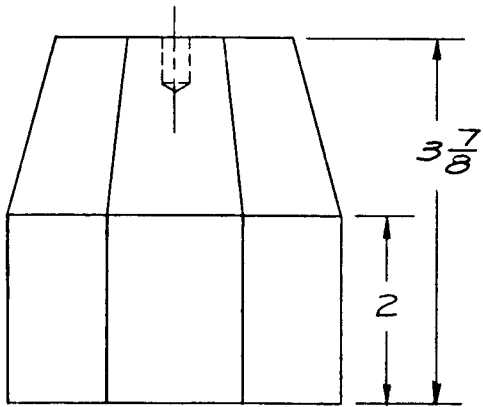
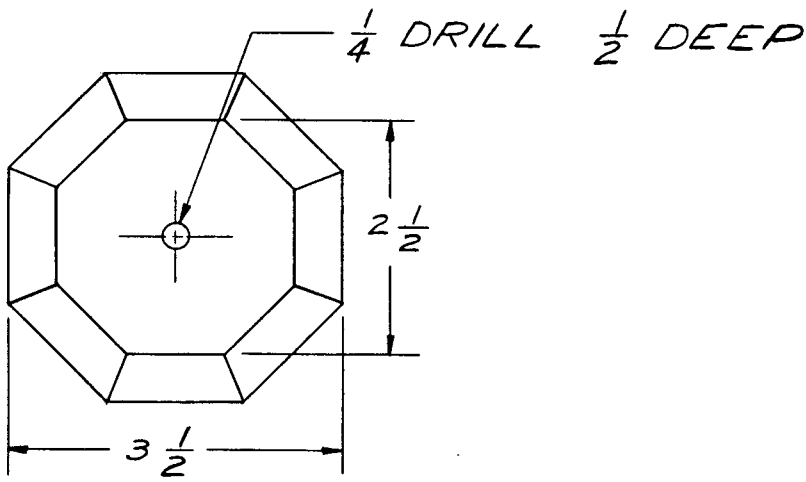


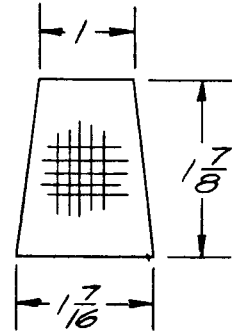
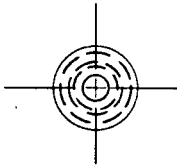
①- A RELAY



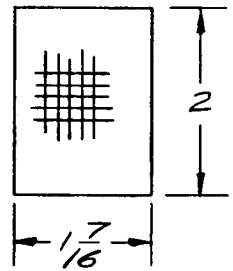
(2-A) RELAY



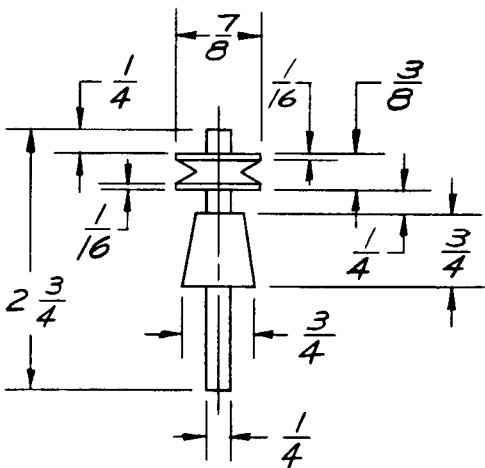
① BASE 1-REQD



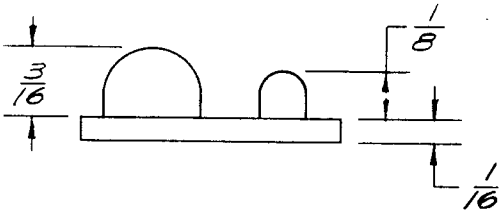
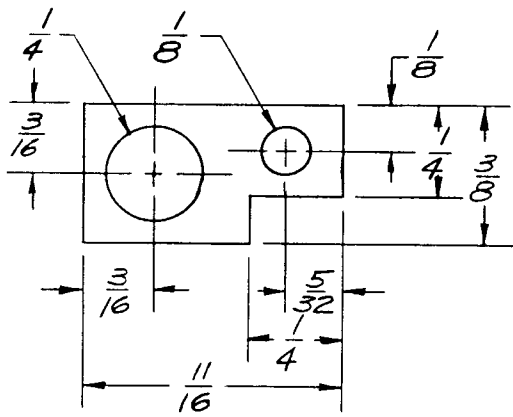
③ SOLAR CELL  
8-REQD.



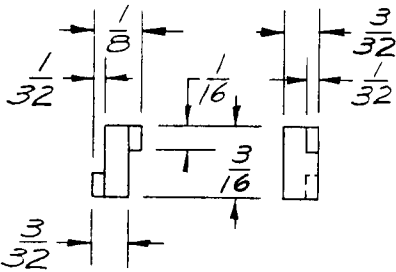
④ SOLAR CELL  
8-REQD.



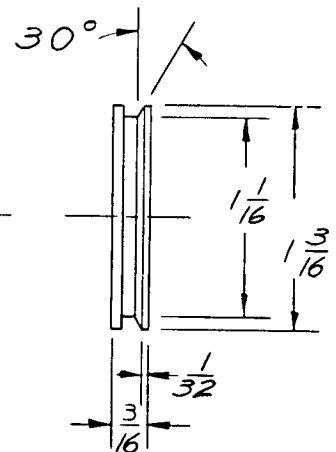
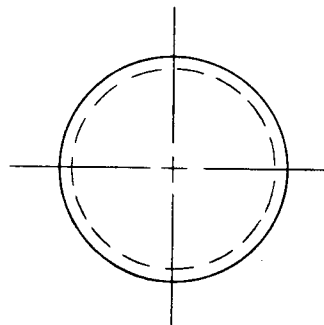
② 1-REQD



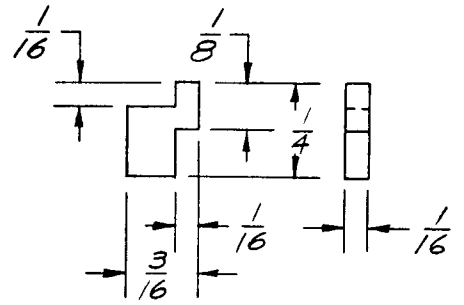
5 1-REQD 4X



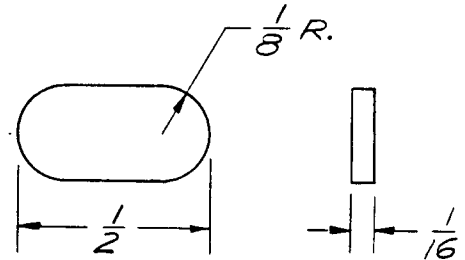
6 4-REQD 4X



9 1-REQD 4X



7 4-REQD 4X



8 1-REQD 4X



# Relay

<b>Recommended materials for construction</b>			
<b>Part no.</b>	<b>Number required</b>	<b>Recommended material</b>	<b>Color</b>
1	One	Wood - pine	White
2	One	Wood - maple	White
3 & 4	Eight each		Black lines on part no. 1 to indicate solar cell surfaces
5	One	Wood - balsa	Blue base
6	Four	Wood - balsa	Gold
7	Four	Wood - balsa	Blue
8	One	Plastic	Blue
9	One	Wood - maple	Silver
10	One	Wood - balsa	Blue base and white projections
11	One	Wood - balsa	Blue base and white projections

<b>Recommended procedure for construction</b>				
<b>Part no.</b>	<b>Suggested materials</b>	<b>Fabrication technique</b>	<b>Surface treatment</b>	<b>Assembly recommendations</b>
1	Wood - pine	Construct octagon body to specified dimensions. Drill as per detailed drawing	Finish sand all surfaces. Paint white	
		Layout and mark solar cells on all surfaces as indicated on detail nos. 3 and 4	Marks to be made with India ink	
2	Wood (maple), plastic or brass	Turn on lathe to specified dimensions	Finish sand all surfaces and paint white	Assemble part no. 2 to part no. 1 using epoxy resin
5	Balsa wood, fiber or plastic with dowel rod for the round parts	Construct to specified dimensions	Finish sand all surfaces	
6	Balsa wood, fiber or plastic	Construct to specified dimensions	Finish sand all surfaces	
7	Balsa wood, fiber or plastic	Construct to specified dimensions	Finish sand all surfaces	
8	Balsa wood, fiber or plastic	Construct to specified dimensions	Finish sand all surfaces	
9	Wood (maple) or plastic	Turn on lathe to specified dimensions	Finish sand all surfaces	Assemble part no. 9 to part no. 1 using epoxy resin
10	Balsa wood and dowel rod	Construct to specified dimensions	Finish sand all surfaces	
11	Balsa wood, fiber or plastic	Construct to specified dimensions	Finish sand all surfaces	Assemble parts no. 5, 6, 7, 8, 10, and 11 to part no. 1 using epoxy resin
			Paint parts no. 5, 7, 8, 10, and 11 blue	
			Paint part no. 6 gold	
			Paint part no. 9 silver	
			Paint projections on parts no. 5, 10, and 11 white	