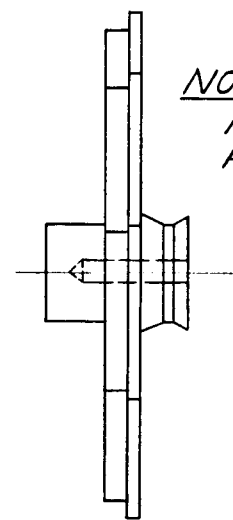
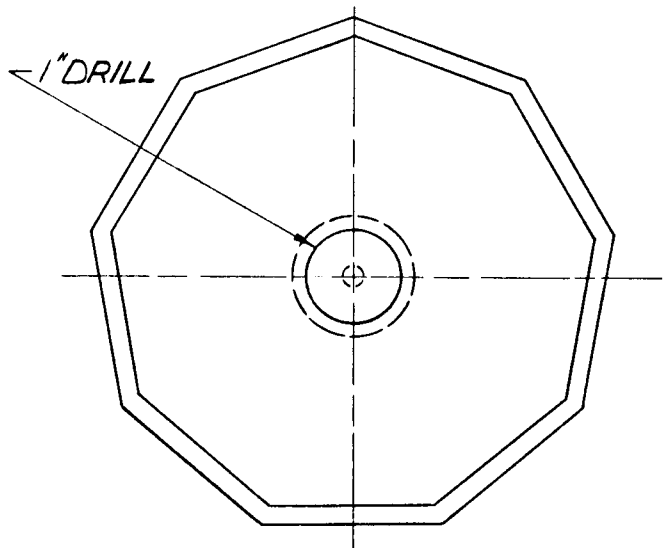


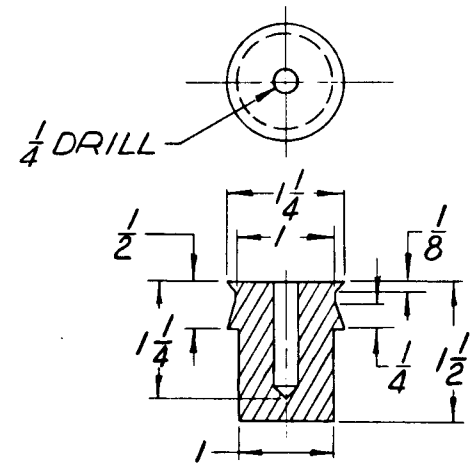
**NOTE:**  
 1.-  $\frac{1}{4}$  &  $\frac{1}{8}$  PLYWOOD GLUED AS SHOWN

DETAIL NO. 1  
SCALE 1"=1"

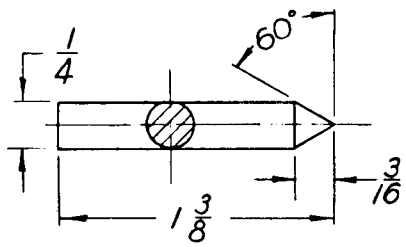


**NOTE:**  
 FOR DIMENSIONS  
 REFER TO DETAIL NO. 1

DETAIL NO. 4  
SCALE 1"=1"

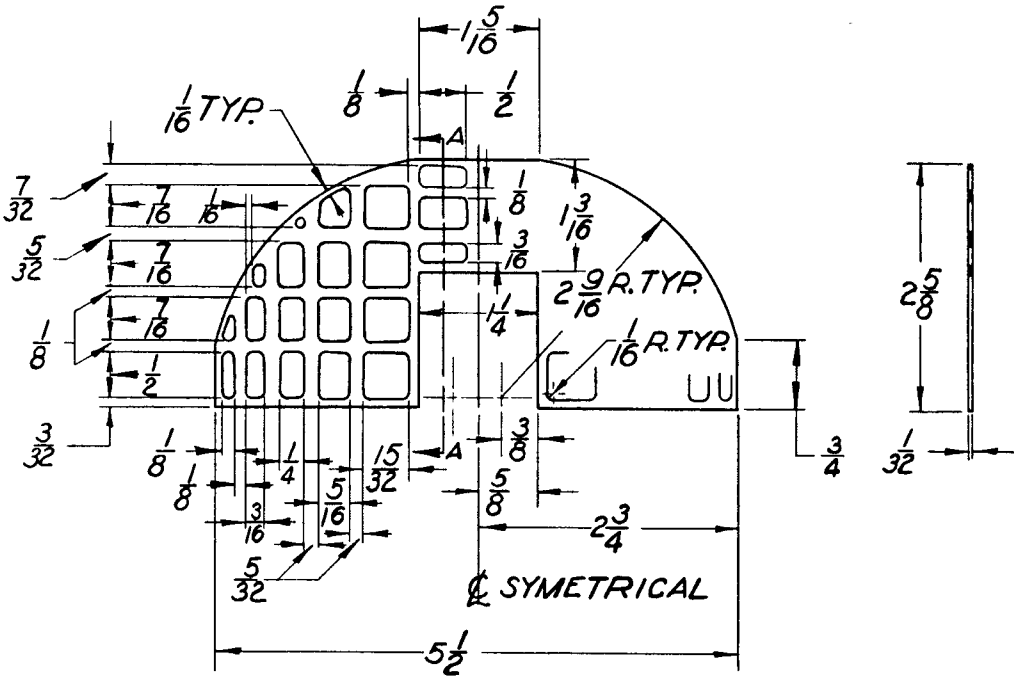


DETAIL NO. 2  
SCALE 1"=1"

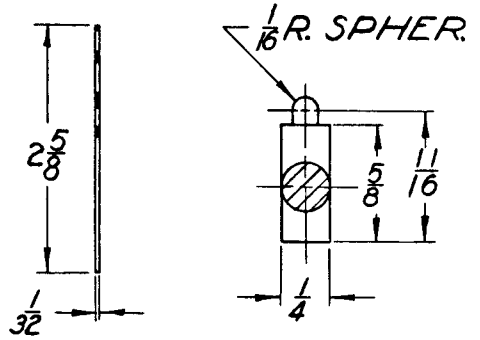


DETAIL NO. 3  
SCALE  $\frac{2}{1}$

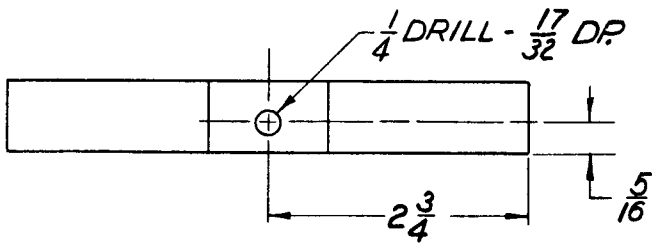
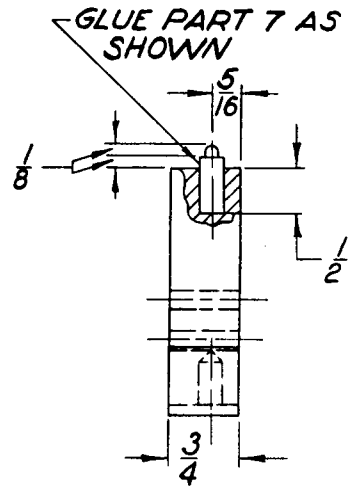
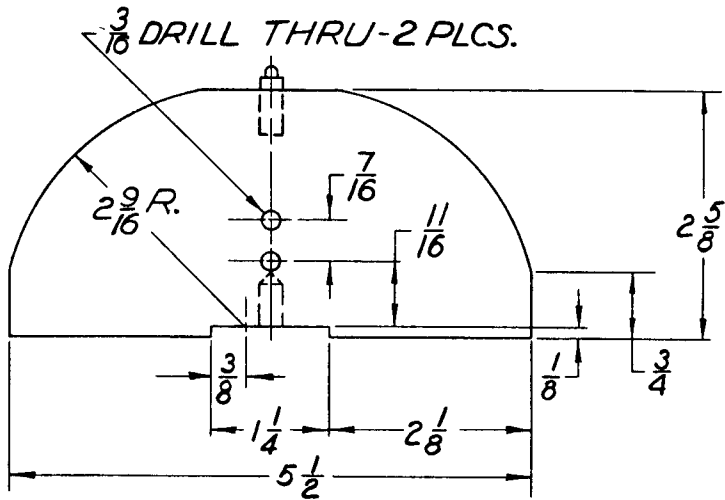
**DETAIL NO. 5**  
SCALE 1"=1"



**DETAIL NO. 7**  
SCALE 1"=1"

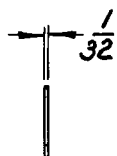
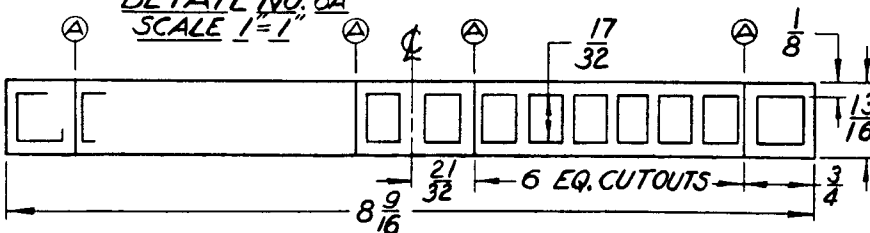


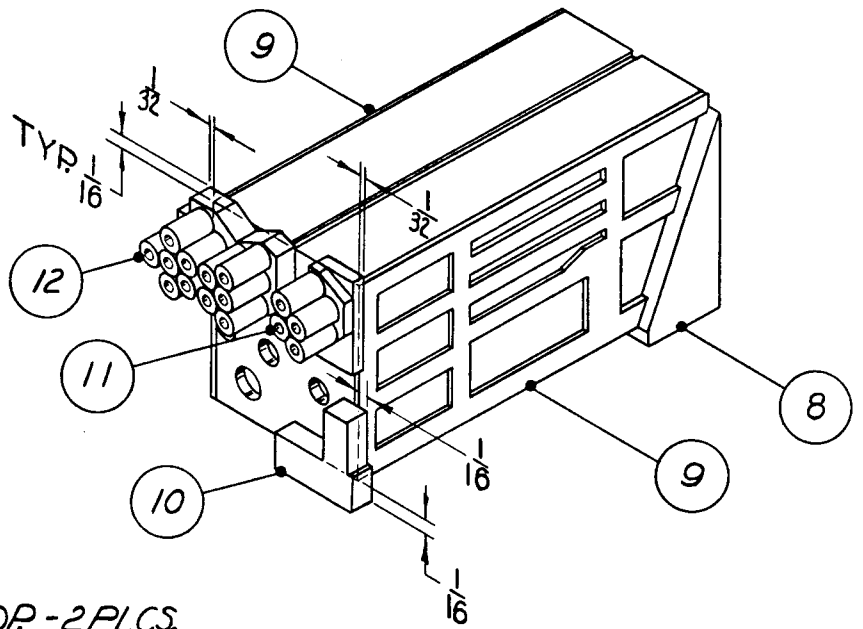
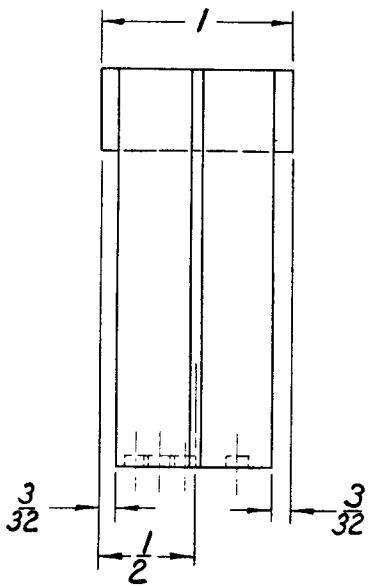
**DETAIL NO. 6**  
SCALE 1"=1"



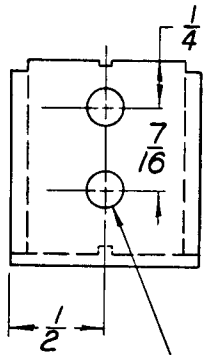
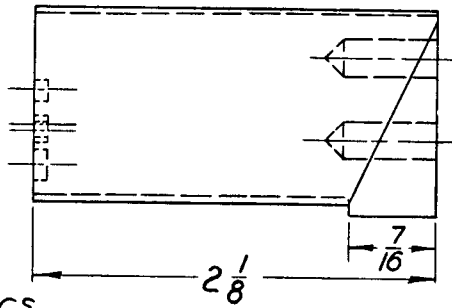
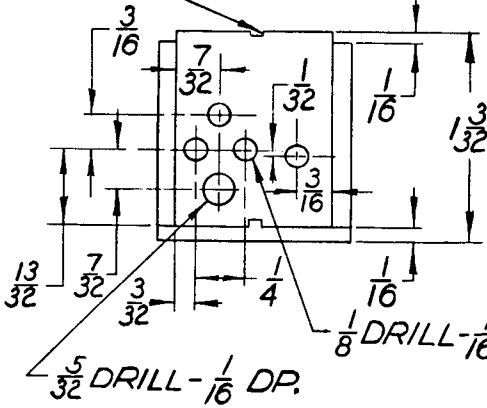
⊕ POSITION INDICATES CUT LINES PRIOR TO CEMENTING TO PART 6.

**DETAIL NO. 6A**  
SCALE 1"=1"





$\frac{1}{16}$  SAW KERF -  $\frac{1}{32}$  DP. - 2 PLCS.

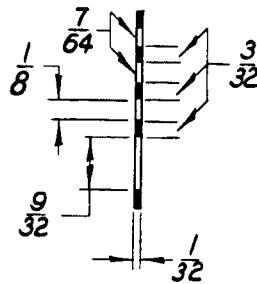
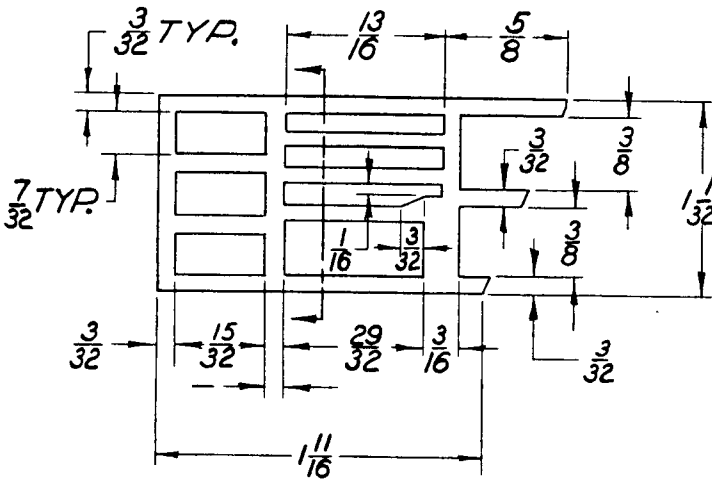


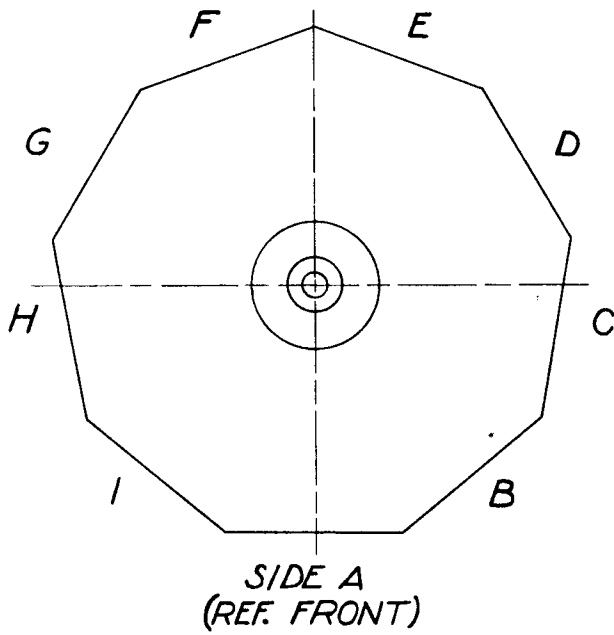
$\frac{3}{16}$  DRILL -  $\frac{1}{2}$  DP. - 2 PLCS.

DETAIL NO. 8  
SCALE  $\frac{2}{1}$

DETAIL NO. 9  
SCALE  $\frac{2}{1}$

NOTE:  
PARTS 9, 10, 11 & 12 TO  
BE GLUED TO PART 8  
AS SHOWN ABOVE.

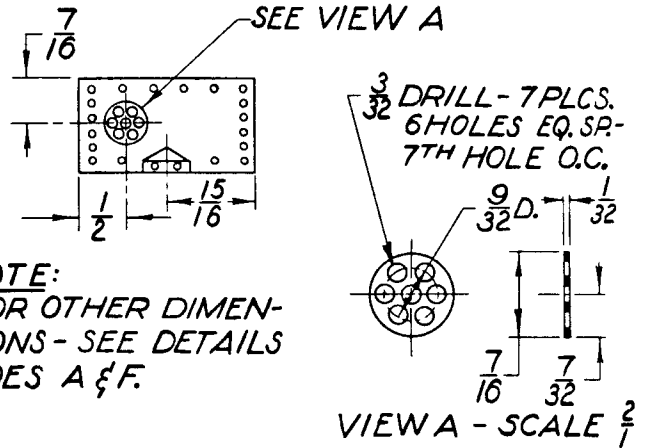




**NOTES:**

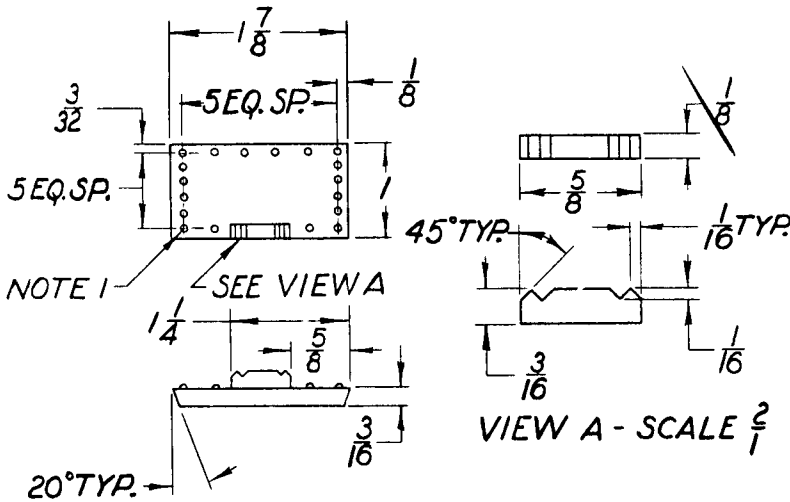
- 1.-RIVETS TO BE ESCUTCHEON PINS OR STRAIGHT PINS-CUT SHANK.
- 2.-PAINT ALL PARTS SILVER-EX. VIEW 'A' SIDE C - TO BE BLACK.

DETAILS - SIDE C

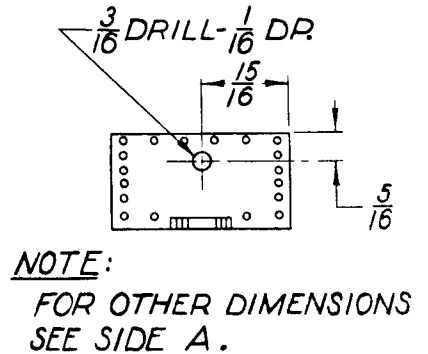


**NOTE:**  
FOR OTHER DIMENSIONS - SEE DETAILS SIDES A & F.

DETAILS - SIDE A & G



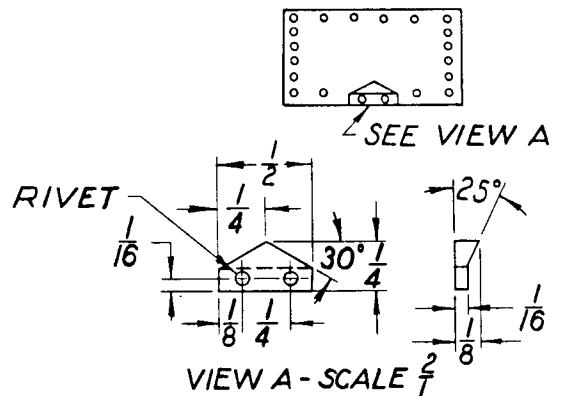
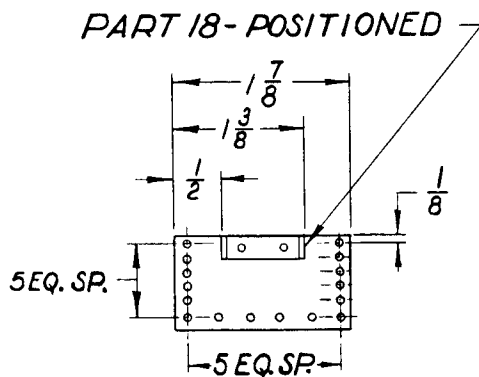
DETAILS - SIDE D



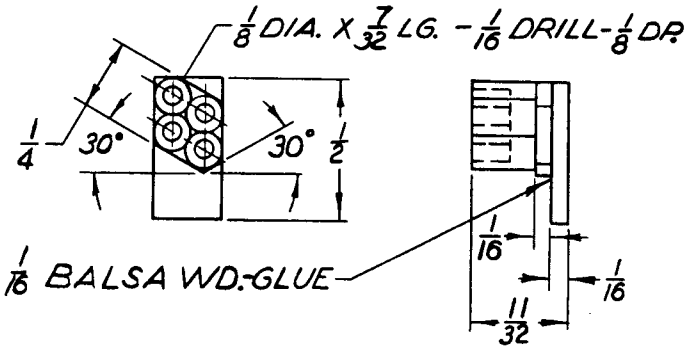
DETAILS - SIDE F

**NOTE:**  
FOR OTHER DIMENSIONS SEE SIDE A.

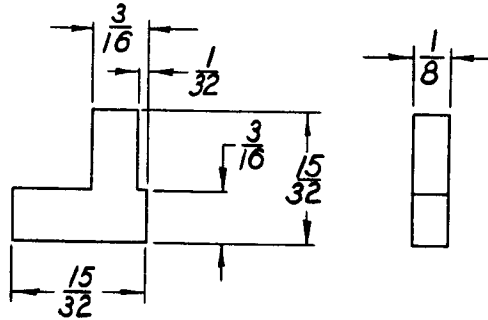
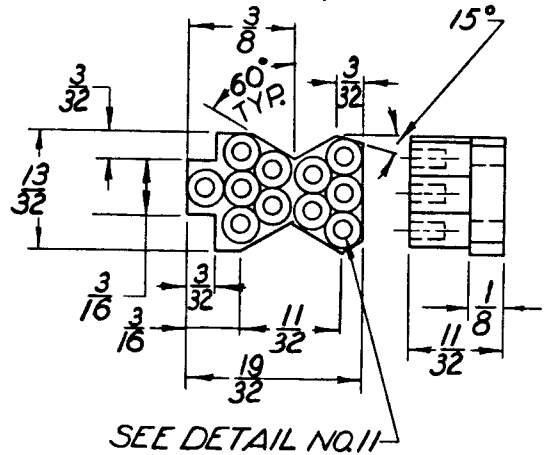
DETAILS - SIDES B, E & H



DETAIL NO. 11  
SCALE  $\frac{3}{7}$

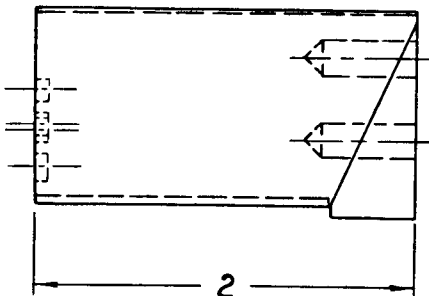


DETAIL NO. 12  
SCALE  $\frac{3}{7}$



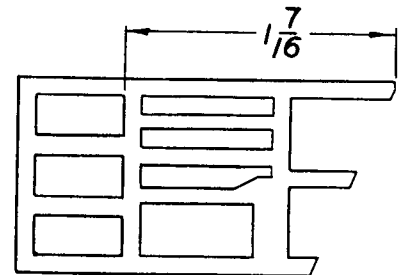
DETAIL NO. 10  
SCALE  $\frac{3}{7}$

DETAIL NO. 13  
SCALE  $\frac{2}{7}$

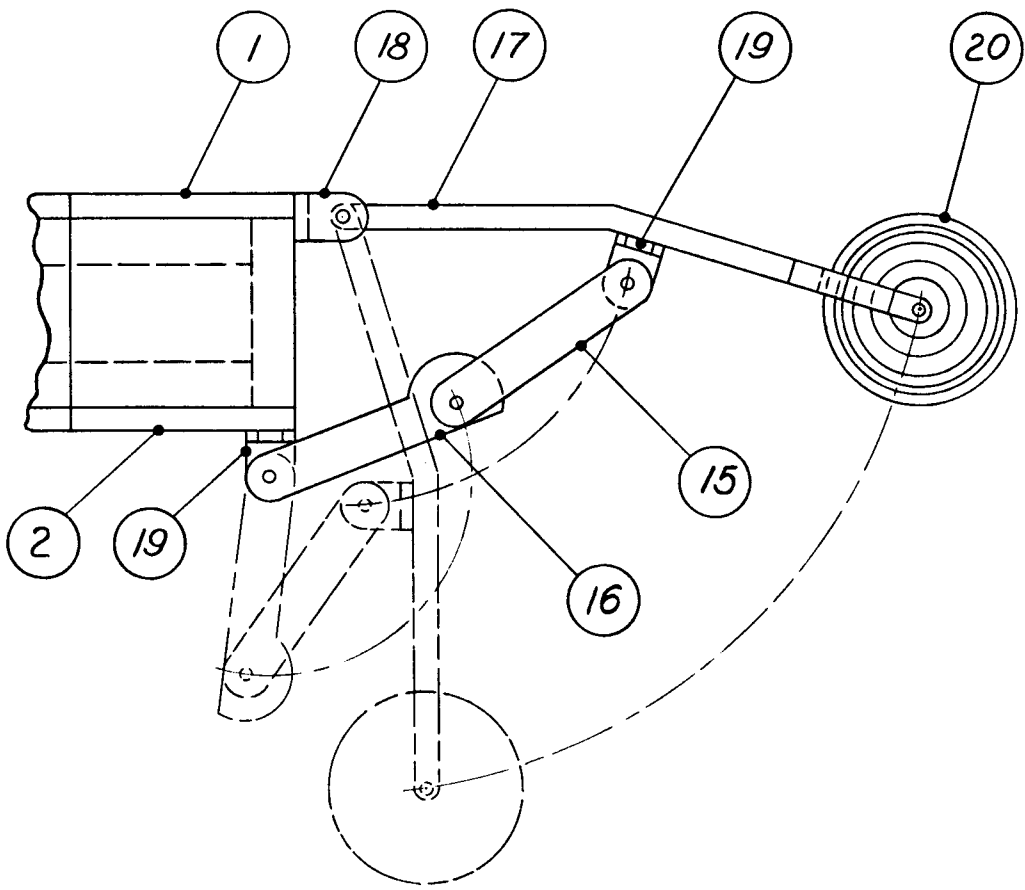


NOTE:  
FOR ALL OTHER DIMENSIONS  
SEE DETAIL NO. 8.

DETAIL NO. 14  
SCALE  $\frac{2}{7}$



NOTE:  
FOR ALL OTHER DIMENSIONS  
SEE DETAIL NO. 9.

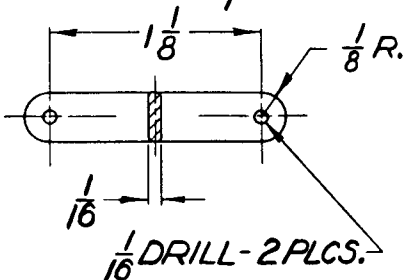


NOTES:

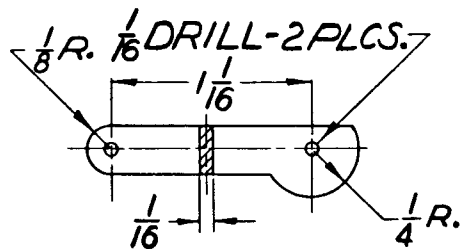
- 1.- ATTACH BRACKETS 18 & 19 TO PARTS 1 & 2 WITH NO. 0 F.H. WD. SCR. -  $\frac{3}{8}$  LG.
- 2.- ATTACH BRACKET 19 TO PART 17 WITH  $\frac{1}{16}$ " RIVETS (BRAZING ROD).

- 3.- LINKAGE ARMS NOS. 15 & 16 RIVETED TOGETHER & TO BRACKETS 19 WITH  $\frac{1}{16}$ " RIVETS (BRAZING ROD).
- 4.- STABILIZING ARMS (17) TO BE ATTACHED TO THE NONAGON SIDES B, E & H.

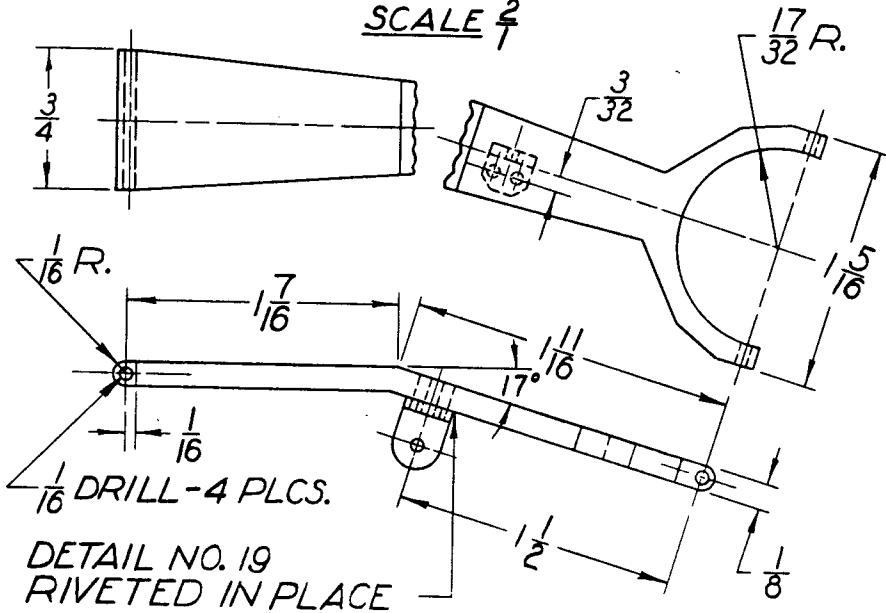
DETAIL NO. 15  
SCALE  $\frac{2}{1}$



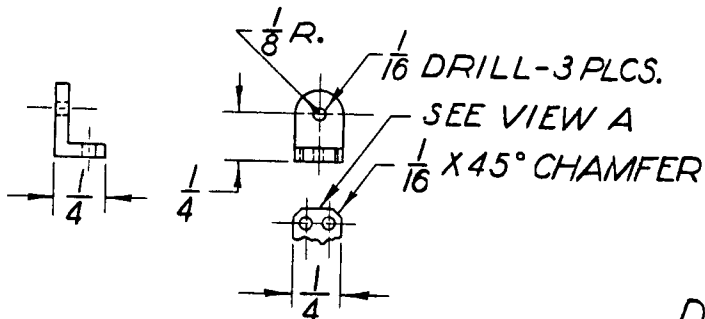
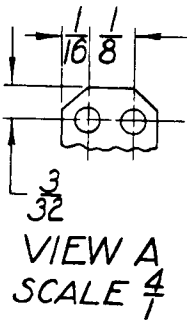
DETAIL NO. 16  
SCALE  $\frac{2}{1}$



DETAIL NO. 17  
SCALE  $\frac{2}{1}$

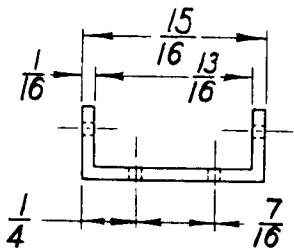


DETAIL NO. 19  
RIVETED IN PLACE

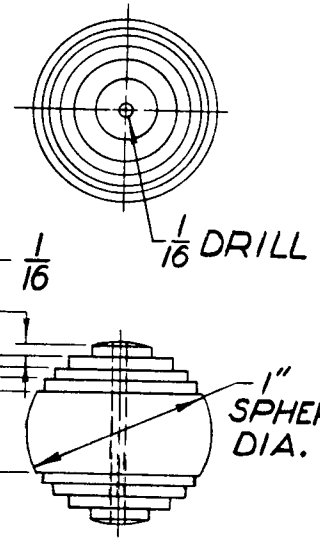
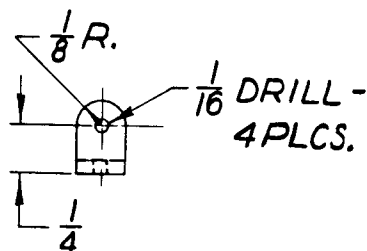


DETAIL NO. 19  
SCALE  $\frac{2}{1}$

DETAIL NO. 20  
SCALE  $\frac{2}{1}$

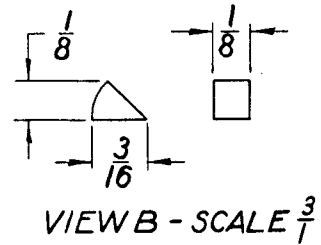
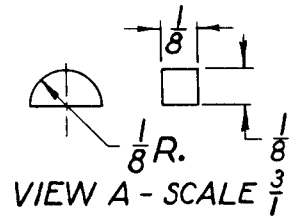
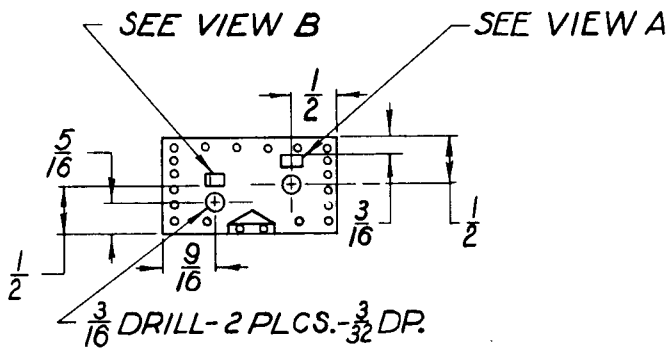


DETAIL NO. 18  
SCALE  $\frac{2}{1}$



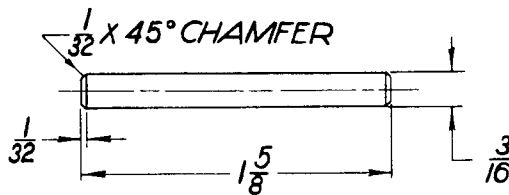


DETAILS - SIDE 1

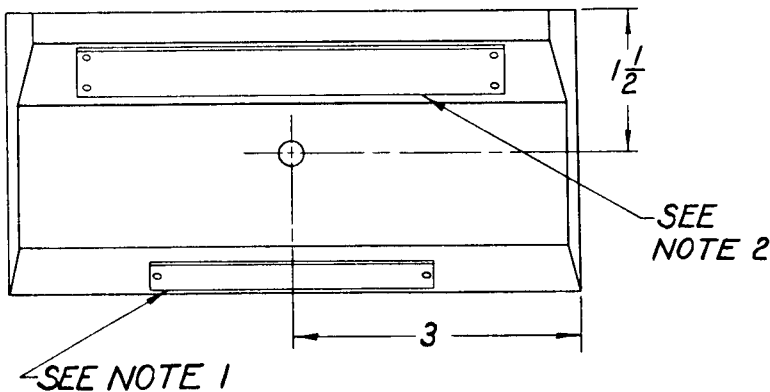


NOTE:  
FOR OTHER DIMENSIONS -  
SEE SIDES A & F.

DETAIL NO. 21  
SCALE -  $\frac{2}{1}$

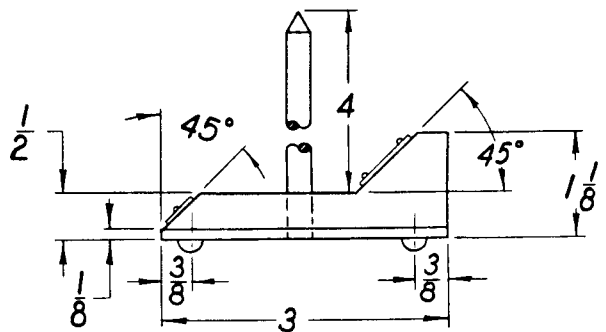
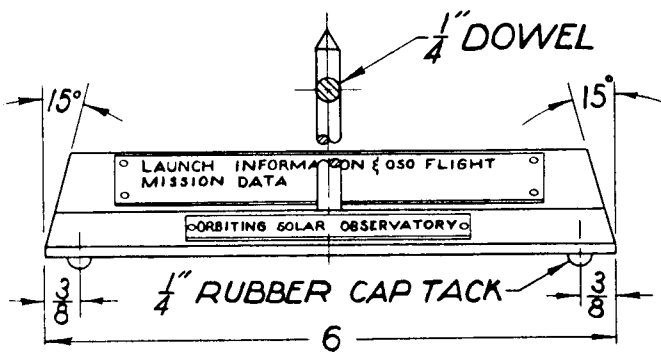


O.S.O. MODEL STAND  
SCALE 1'-1"



NOTES:

1. -  $\frac{3}{8}$ " X 3" BRASS PLATE - STAMP WITH  $\frac{1}{8}$ " LETTERS.
2. - COVER TYPED INFORMATION WITH  $\frac{1}{16}$ " X  $\frac{3}{4}$ " X  $4\frac{1}{2}$ " CLEAR PLASTIC.



# Orbiting Solar Observatory

<b>Recommended materials for construction</b>			
<b>Part no.</b>	<b>Number required</b>	<b>Recommended material</b>	<b>Color</b>
1	Two	Plywood - 1/8"	Silver
2	Two	Plywood - 1/4"	Natural
3	One	Wood - maple	Silver
4	One	Wood - maple	Silver
5	Two	Wood - balsa	Silver
6	One	Wood - pine	Black
6A	One	Wood - balsa	Silver
7	One	Wood - maple	Black
8	One	Wood - pine	Black
9	Two	Wood - balsa	Silver
10	Two	Wood - maple	Silver
11	Two	Wood - maple	Silver
12	Two	Wood - maple	Black
13	One	Wood - pine	Black
14	Two	Wood - balsa	Silver
15	Three	Band iron	Silver
16	Three	Band iron	Silver
17	Three	Band iron	Silver
18	Three	Band iron	Silver
19	Six	Band iron	Silver
20	Three	Wood - maple	Silver
21	Two	Dowel - rod	Natural
22	Twelve	Metal wood screws	Silver
23	Three	Metal brazing rod	Natural
24	Fifteen	Metal brazing rod	Natural
25	One	Wood - maple	Silver
A-I	Nine	Wood - pine	Silver

<b>Recommended procedure for construction</b>				
<b>Part no.</b>	<b>Suggested materials</b>	<b>Fabrication technique</b>	<b>Surface treatment</b>	<b>Assembly recommendations</b>
1	Wood - 1/8" plywood	Layout and cut a nonagon to specified dimensions		
2	Wood - 1/4" plywood	Layout and cut a nonagon to specified dimensions		
4	Wood - maple	Turn on lathe to specified dimensions and drill as specified		
A-I	Wood - pine Use escutcheon pins for surface effect	Fabricate parts to specified dimensions and details	Finish sand all surfaces	Subassemble as indicated on detailed drawings
25	Wood - maple	Turn on lathe as specified on detail no. 1 and drill to accommodate part no. 3	Finish sand all surfaces	
3	Dowel - rod	Cut and shape to specified dimensions		Subassemble parts 1, 2, 3, 4, 25, and A through I
15, 16, 17, 18, 19	Band iron	Cut and shape to specified dimensions		Subassemble parts 15, 16, 17, 18 and 19 as noted and attach one each to parts B, E and H with part no. 22
20	Wood - maple	Turn on lathe to specified dimensions and drill for part no. 23	Finish sand all surfaces	
23	Brass rod	Cut to specified length	Polish	Assemble part no. 20 to part no. 17 using part no. 23
6	Wood - pine	Cut and shape to specified dimensions		
7	Dowel - rod	Cut and shape to specified dimensions	Finish sand all surfaces	Assemble to part no. 6 as indicated
6A	Wood - balsa	Cut and fabricate to specified dimensions		Glue to part no. 6 as indicated
5	Wood - balsa	Cut and fabricate to specified dimensions		
9	Wood - balsa	Cut and fabricate to specified dimensions		
10	Wood - hard	Fabricate to specified dimensions		
11 & 12	Wood - Dowel - rod and balsa	Fabricate to specified dimensions	Finish sand all surfaces	Glue parts 9, 10, 11, & 12 to part no. 8 as indicated
13	Wood - pine	Cut and fabricate to specified dimensions		

14	Wood - balsa	Cut and fabricate to specified dimensions		Glue parts 10, 11, 12 and 14 to part no. 13 as indicated on detail no. 8
			Finish sand all surfaces	
			Paint assembled part nos. 5, 6A, 9, 10, 11, 12, and 14 silver	
			Paint assembled part nos. 6, 7, 8, and 13 black	
Model stand	Wood - walnut	Recommended construction is indicated on detail sheet	Natural rubbed oil finish	