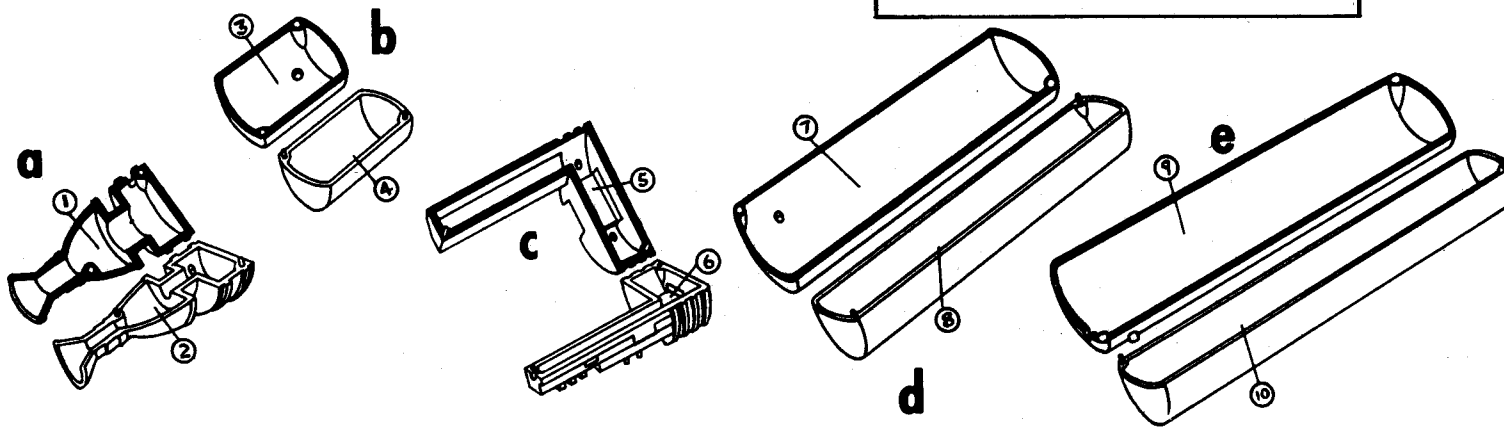


# INSTRUCTIONS

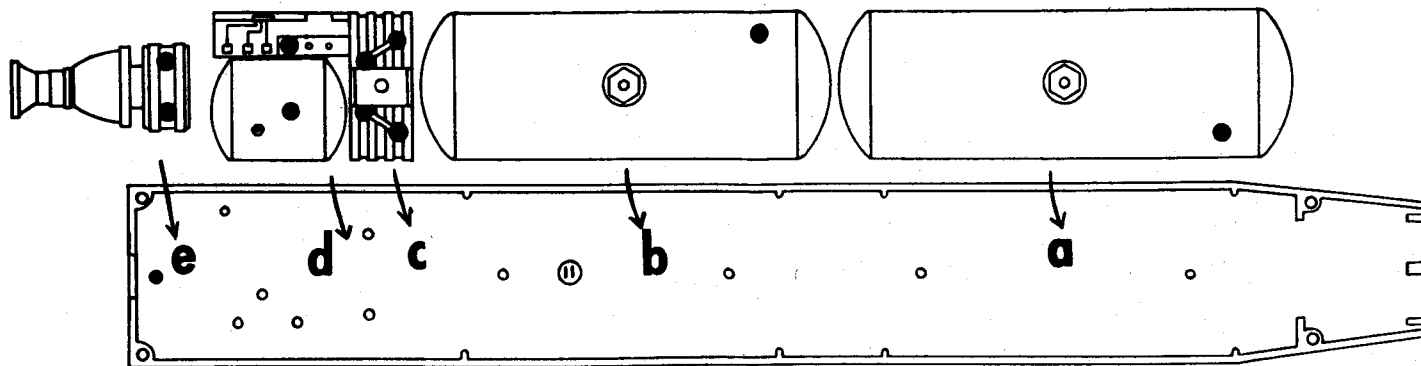
## U.S. NAVY **VANGUARD** MISSILE and SATELLITE

Before assembling your rocket, carefully read all instructions to familiarize yourself with the parts. Be sure to paint all individual sub-assemblies as they are completed, before final assembly. For best painting results be sure to use either Pactra "Namel" paints or Testors "Pla." These paints are designed specifically for use with plastics. Carefully cut parts from runners as needed, not before. Work carefully, following the instructions step by step. Be careful not to let excess cement smear onto the outer surfaces of the parts.

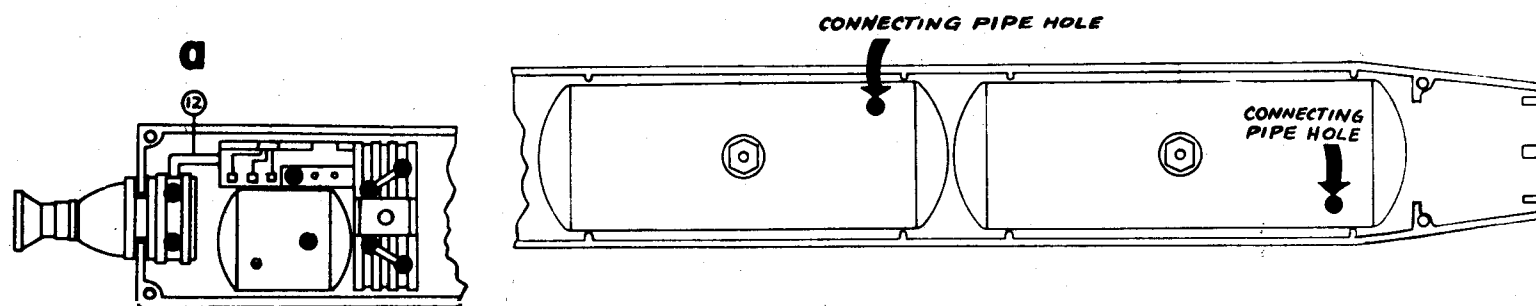
### FIRST STAGE ROCKET ASSEMBLY



1. a. Cement rocket engine halves (pc's 1 & 2) together as shown. Allow to dry. Paint red.  
b. Cement Hydrogen Peroxide tank halves (pc's 3 & 4) together as shown. Allow to dry. Paint yellow.  
c. Cement Fuel pump and Helium gas tank halves (pc's 5 & 6) together as shown. Allow to dry. Paint blue.  
d. Cement fuel tank halves (pc's 7 & 8) together as shown. Allow to dry. Paint red.  
e. Cement Liquid Oxygen tank halves (pc's 9 & 10) together as shown. Allow to dry. Paint yellow.

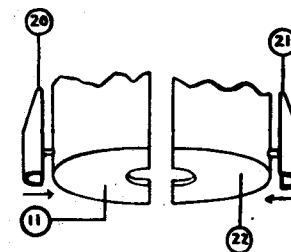
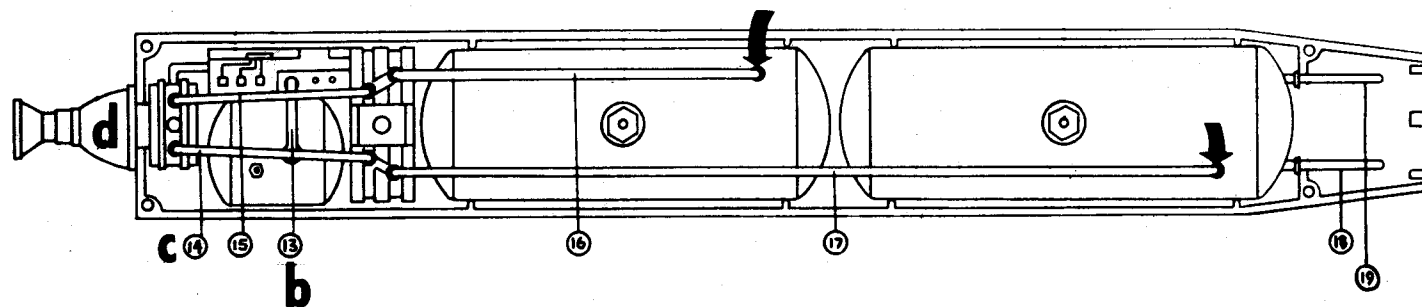


2. a. Cement Liquid Oxygen tank into position in outer rocket shell (pc 11) as shown. (Be sure it is located on the proper locating pins and the connecting pipe holes are facing in the proper direction.) Allow to dry.  
b. Cement Fuel tank into position. (Again be sure the connecting pipe holes are facing in the proper direction.) Allow to dry.  
c. Cement Fuel pump and Helium gas tank into position. Allow to dry.  
d. Cement Hydrogen Peroxide tank into position as shown. Allow to dry.  
e. Place, **DO NOT CEMENT**, rocket engine into position as shown.



3. a. Cement connecting pipe (pc 12) into position in holes provided as shown. Allow to dry.  
b. Cement connecting pipe (pc 13) into position in holes provided as shown. Allow to dry.  
c. Cement remaining connecting pipes (pc's 14, 15, 16, 17, 18 & 19) into position as shown. Allow to dry.  
d. Now cement rocket engine (pc's 1 & 2) securely into position. Allow to dry.

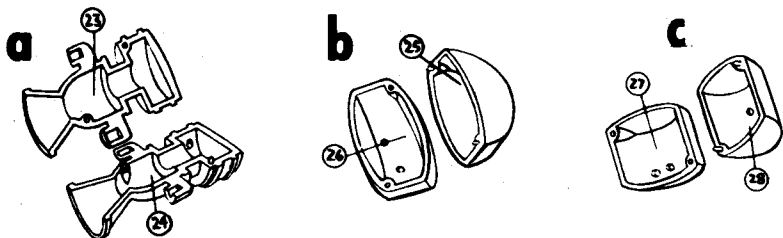
4. Cement Steering Jets (pc's 20 & 21) into position on outer shells of first stage rocket (pc's 11 & 22) as shown. Allow to dry. Paint Steering Jets red.



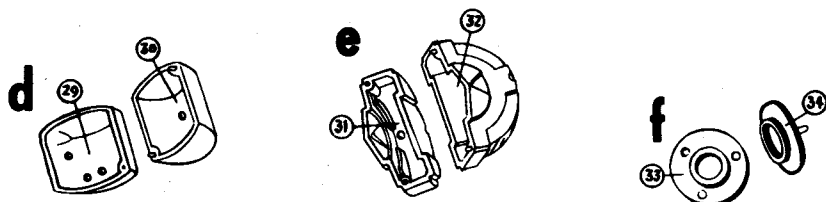
## SECOND STAGE ROCKET ASSEMBLY

5. NOTE: Follow the same procedure in assembling the second stage inner workings as you did for the first stage.

- a. Cement piece 23 & 24 together as shown. Allow to dry. Paint red.
- b. Cement pieces 25 & 26 together as shown. Allow to dry. Paint yellow.
- c. Cement pieces 27 & 28 together as shown. Allow to dry. Paint blue.

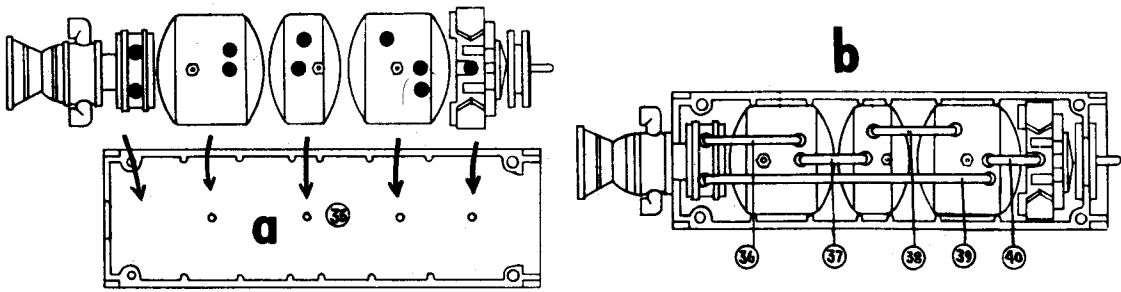


- d. Cement pieces 29 & 30 together as shown. Allow to dry. Paint yellow.
- e. Cement pieces 31 & 32 together as shown. Allow to dry. Paint red.
- f. Cement pieces 33 & 34 together as shown. Allow to dry. Paint blue.



6. NOTE: Follow the same procedure in assembling the second stage inner workings to the outer shell as you did for the first stage.

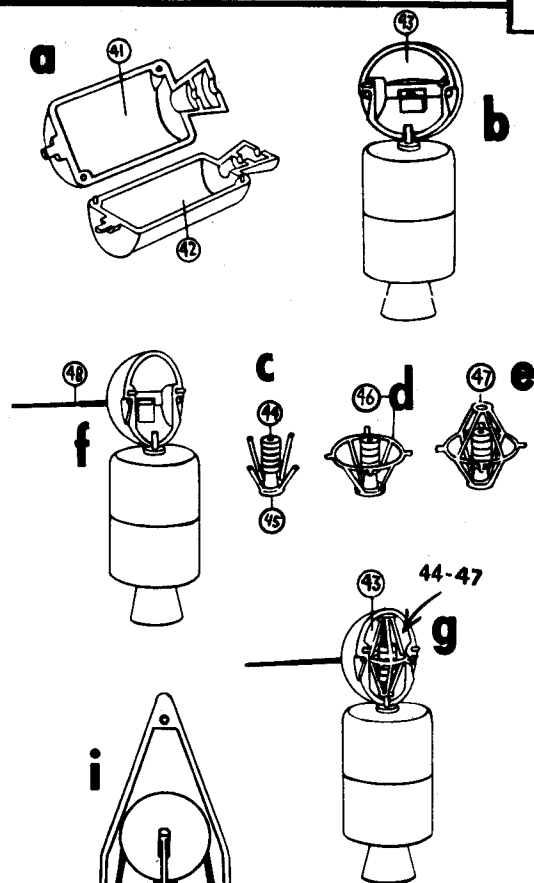
- a. Cement assembled pieces of inner workings to outer shell (pc 35) as shown. Allow to dry.
- b. Cement connecting pipes (pc's 36, 37, 38, 39, 40) into position as shown. Allow to dry.



## THIRD STAGE ROCKET ASSEMBLY

7. NOTE: Follow the same procedure in assembling the third stage as you did for the first two stages.

- a. Cement pieces 41 & 42 together as shown. Allow to dry. Paint yellow.
- b. Cement piece 43 onto assembled 41 & 42 as shown. Allow to dry. Paint red.
- c. Cement piece 44 to piece 45 as shown. Allow to dry.
- d. Cement piece 46 into position as shown. Allow to dry.
- e. Cement piece 47 into position as shown. Allow to dry. NOTE: Paint piece 44 red, Paint pieces 45, 46, 47 white.
- f. Insert antenna rods (pc's 48, 49, 50 & 51) into satellite halves as shown. Do not cement.
- g. Cement assembled pieces 44, 45, 46 & 47 into piece 43 as shown. Allow to dry.
- h. Cement other satellite half (pc 52) onto assembled pieces 43-51. Allow to dry. Paint piece 52 red.
- i. Cement Third Stage inner workings to shell (pc 53) as shown.



8. a. Cement completed second stage to completed first stage. (Allow at least 30 minutes to dry.)  
b. Cement completed third stage to completed first and second stages. (Allow at least 30 minutes to dry.)
9. a. Cement 2 halves of Launching stand (pc's 56 & 57) together as shown. Allow to dry.  
b. Cement stand ring (pc 58) into position as shown. Allow to dry.
10. Cement completed rocket to Launching stand as shown. Allow to dry.
11. Fit cover pieces 22, 54 & 55 over finished Rocket. (DO NOT CEMENT.)

